

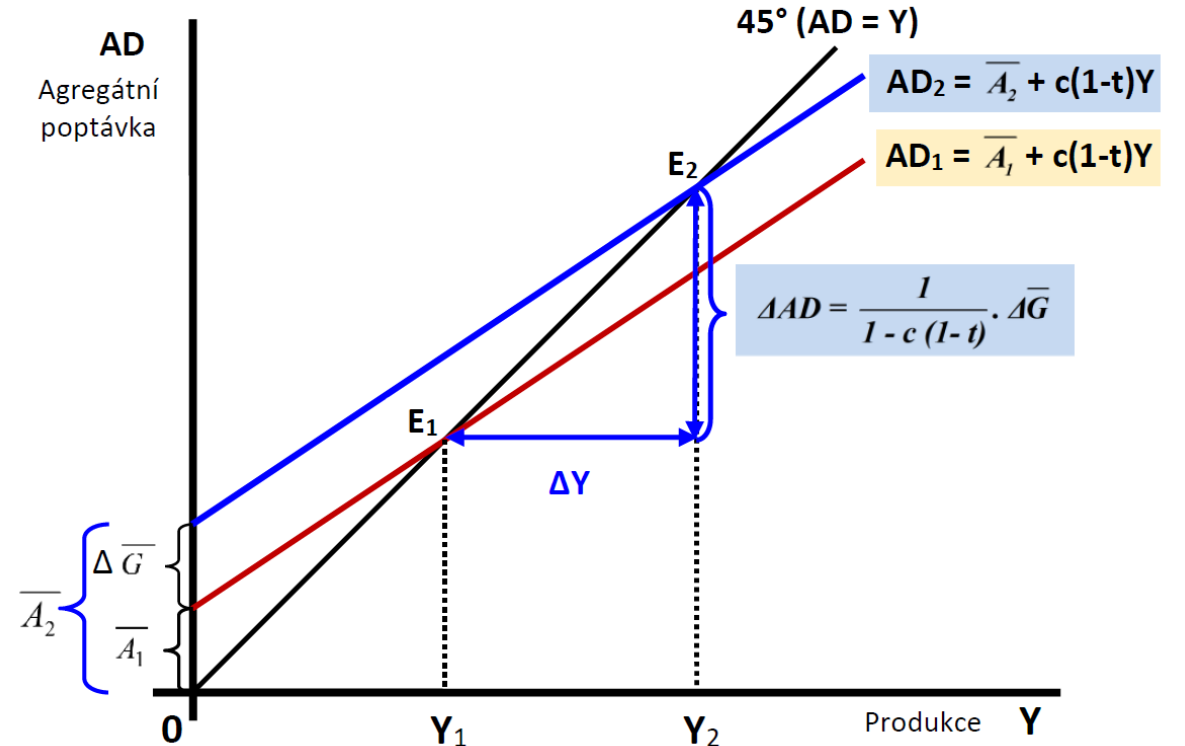
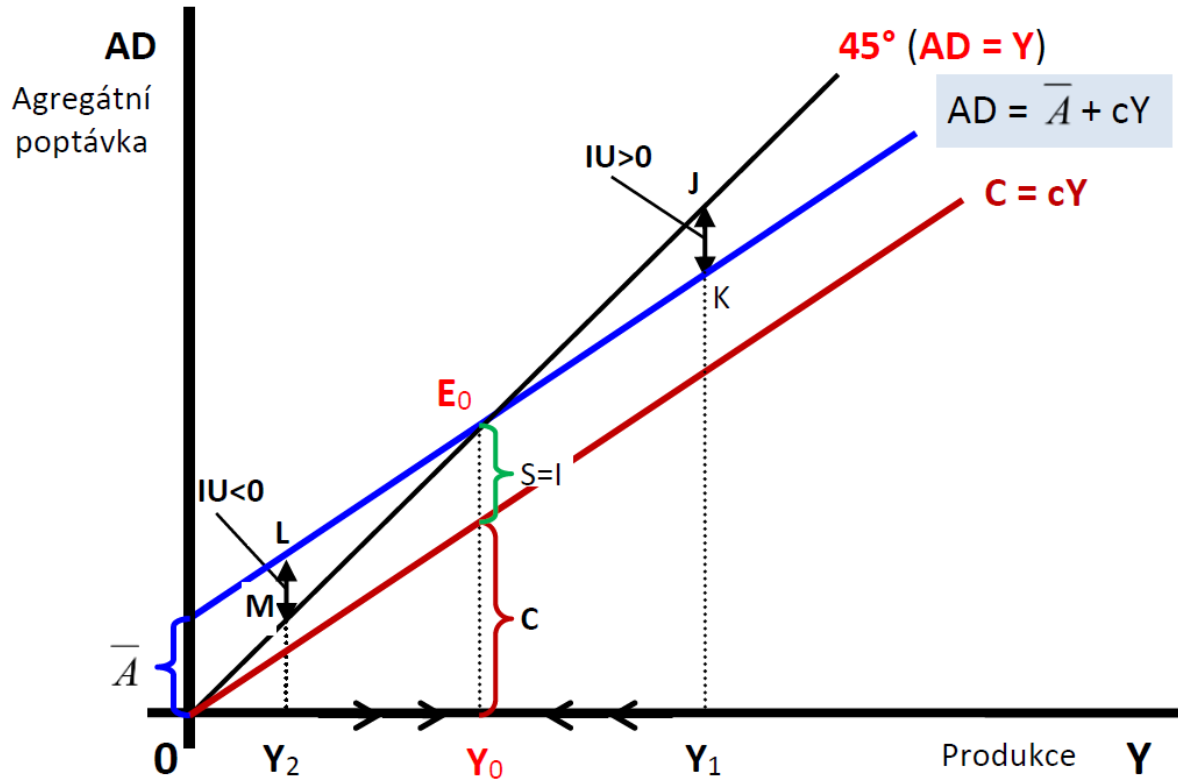
Opakování grafů

Makroekonomie 2

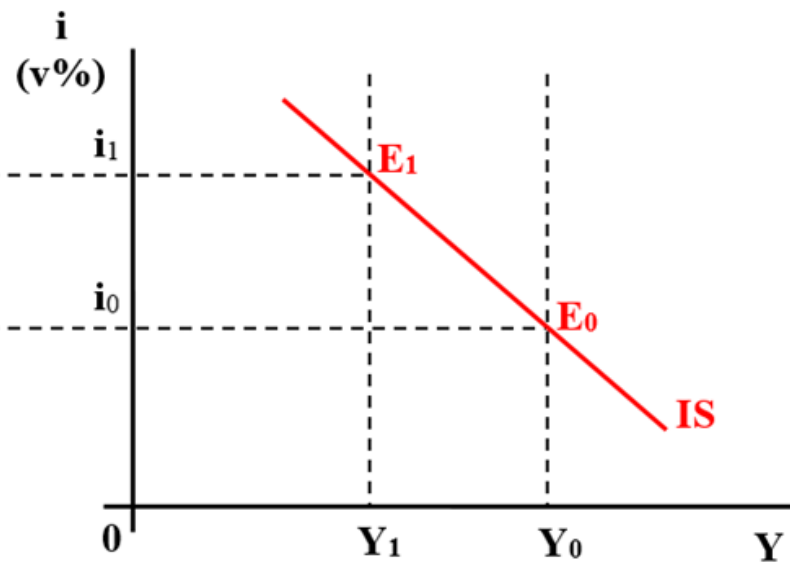
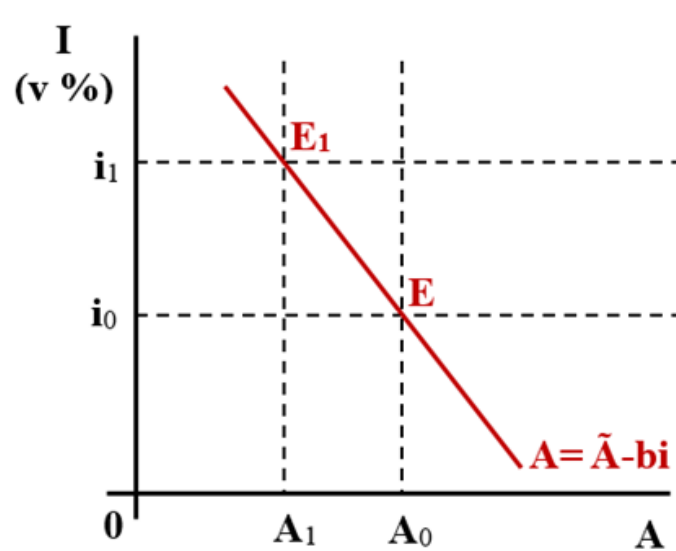
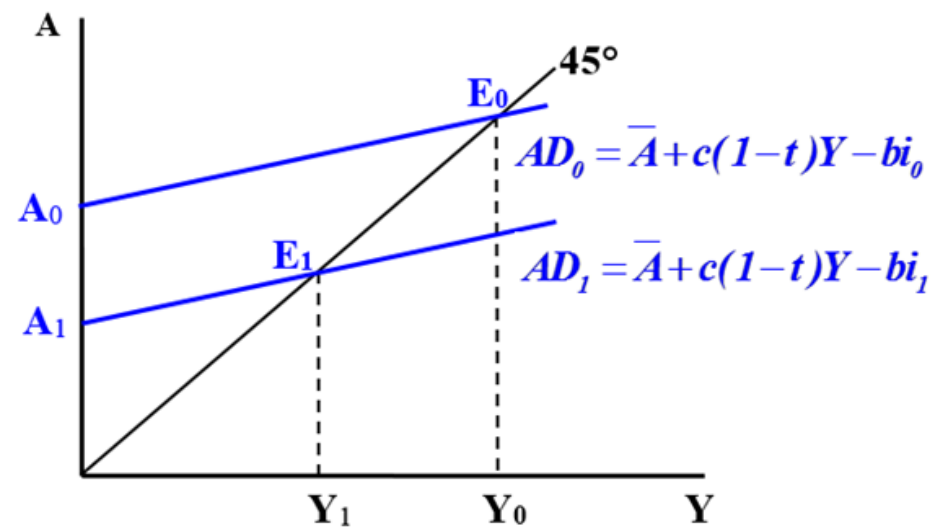
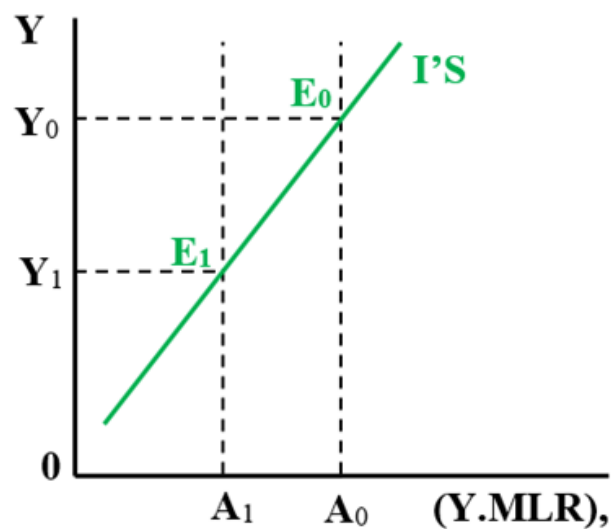
Cvičení 7.12.2022

Jarmila Zimmermannová

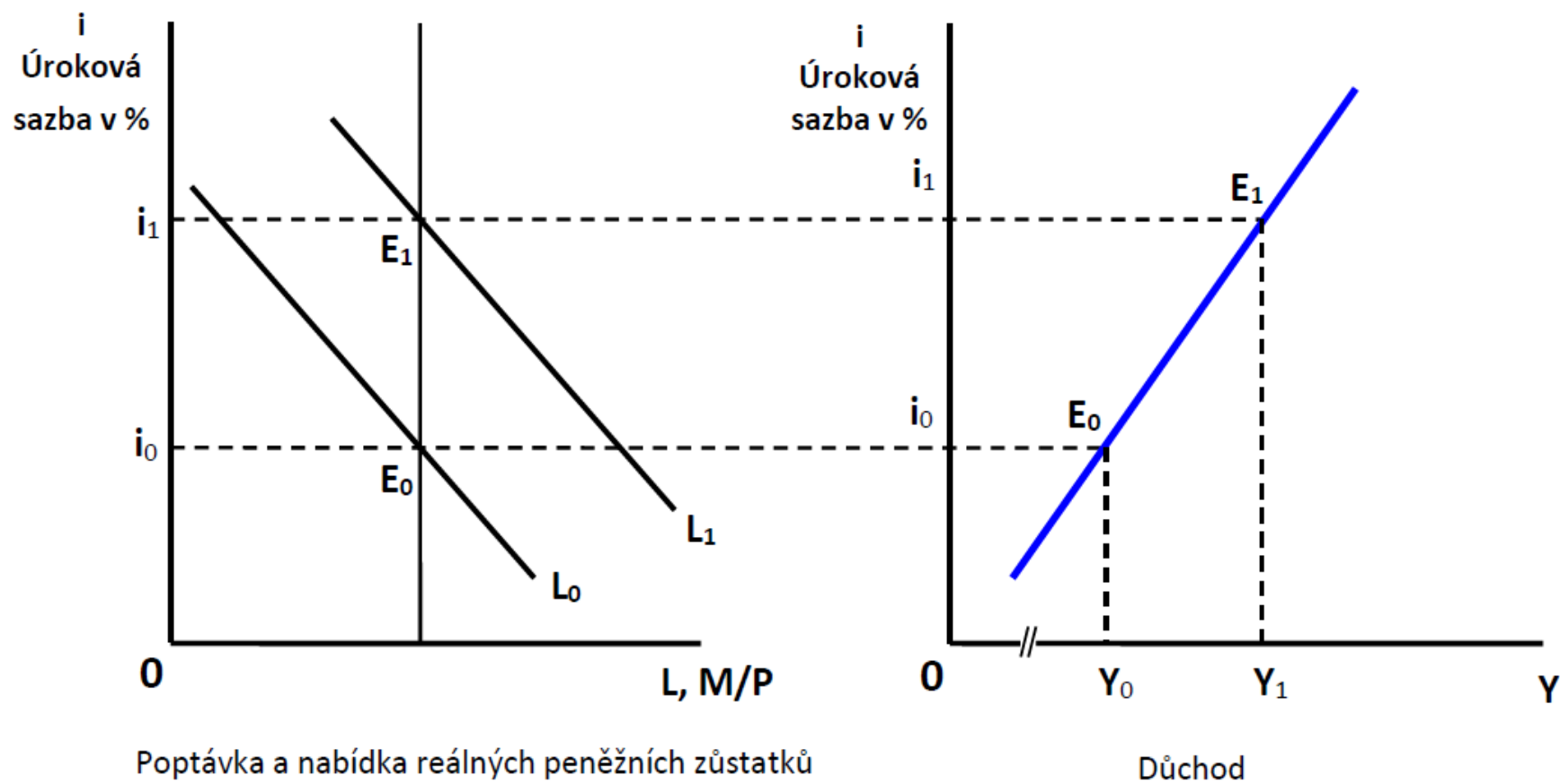
Určení rovnovážné produkce – 2 a 3 sektorový model



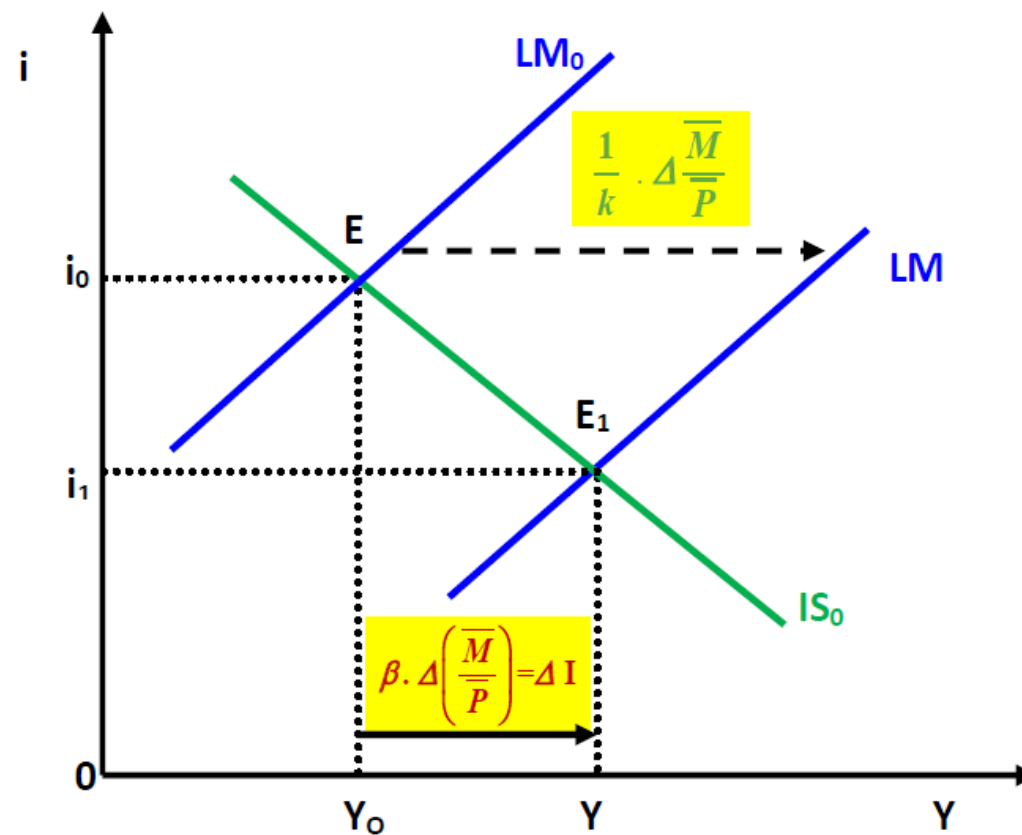
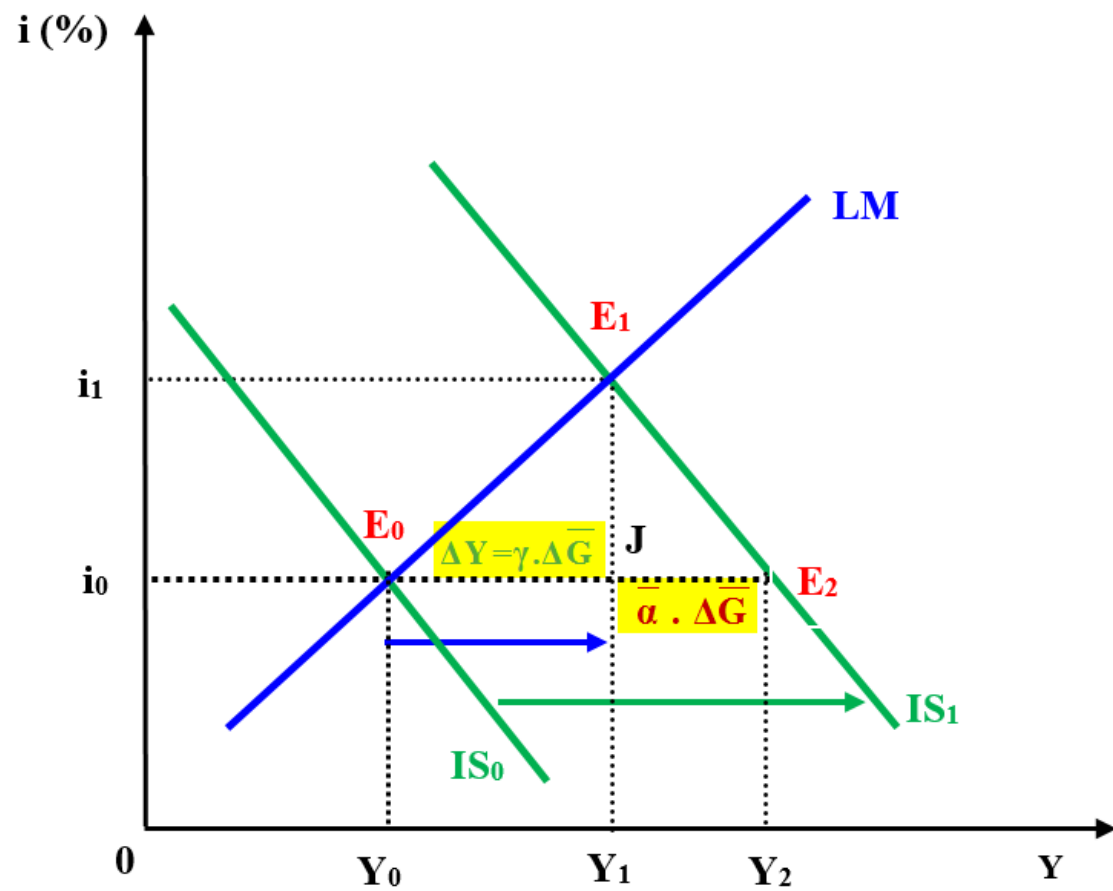
Křivka IS



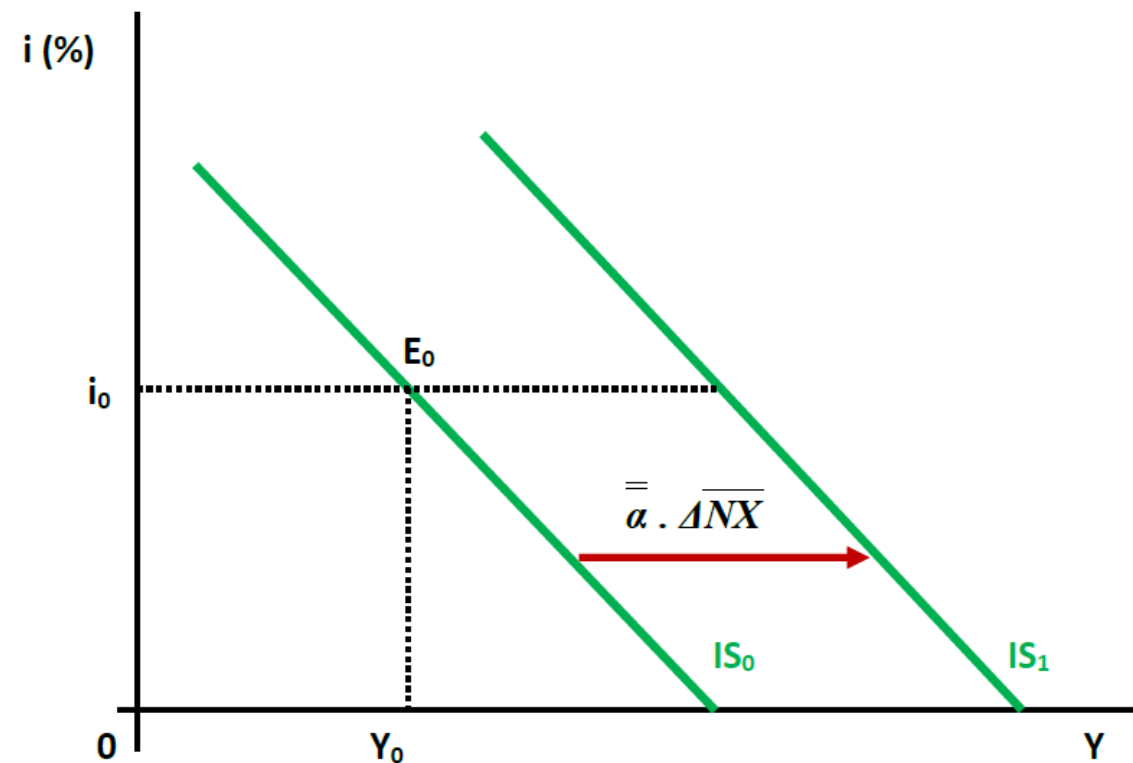
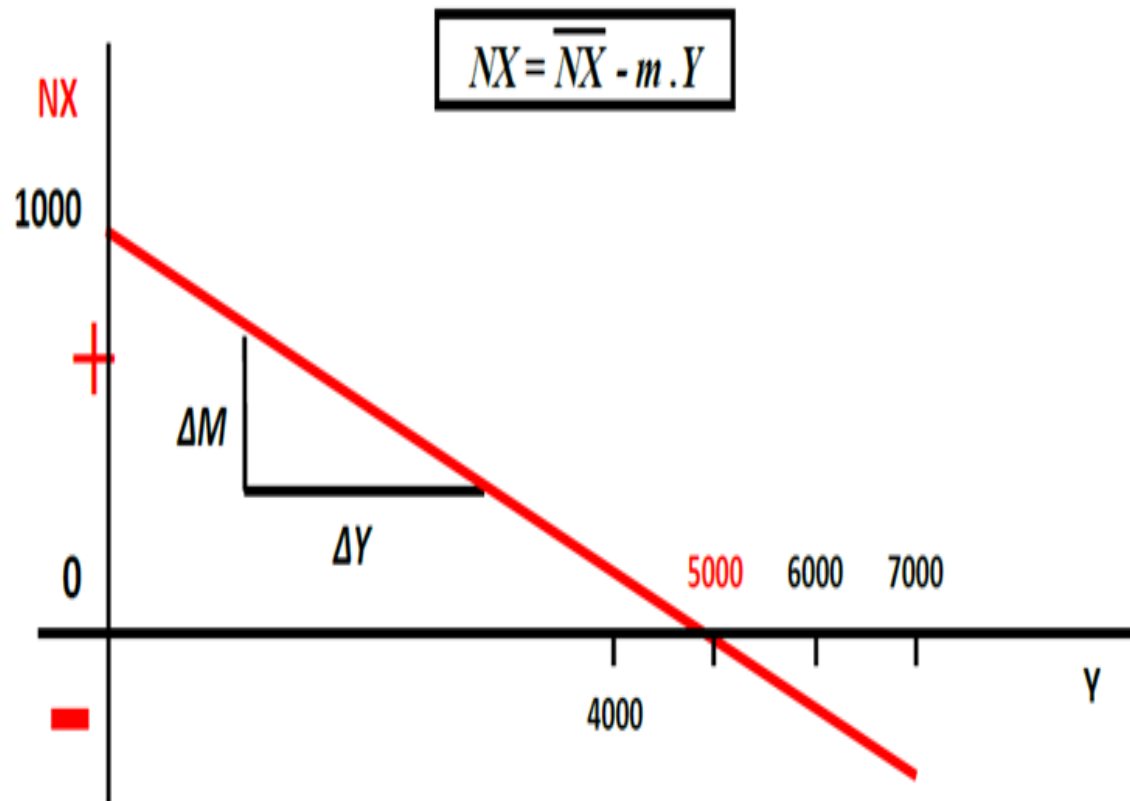
Křivka LM



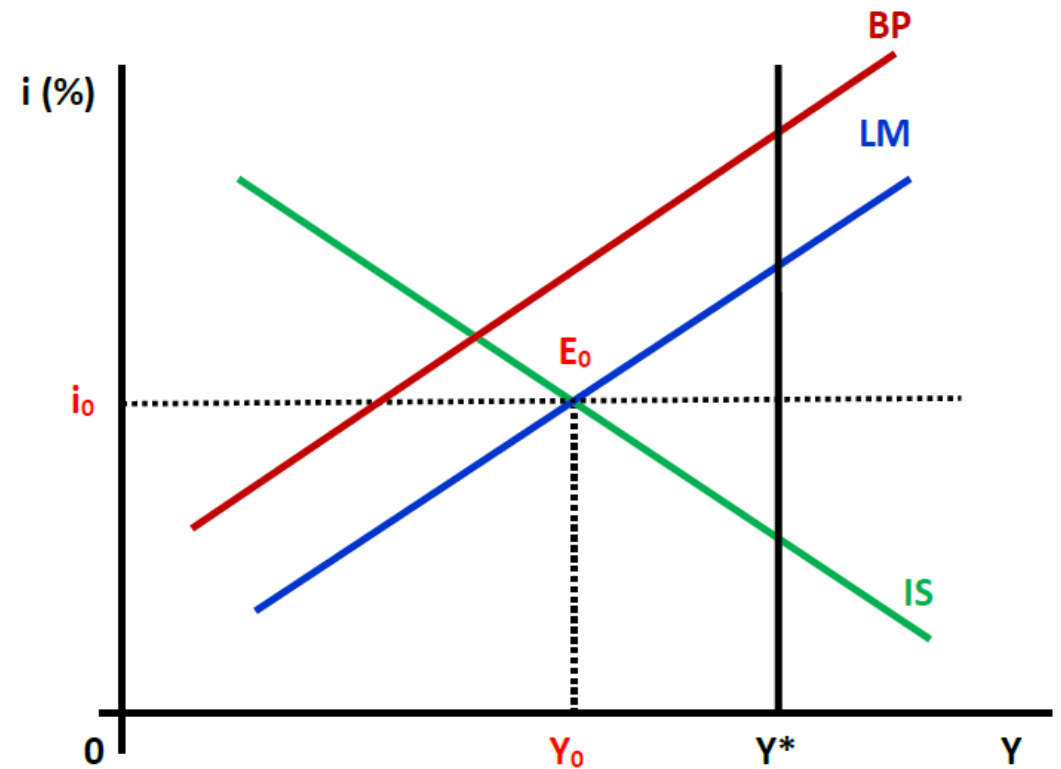
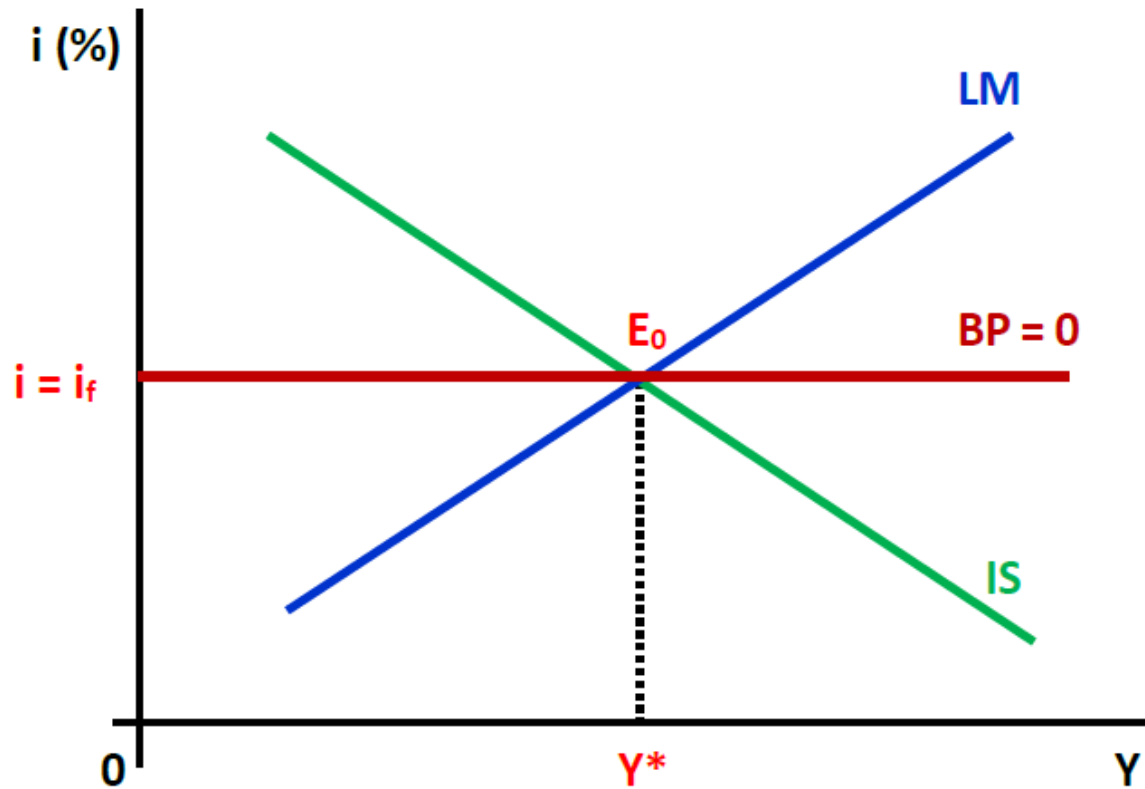
Fiskální a monetární politika v modelu IS-LM



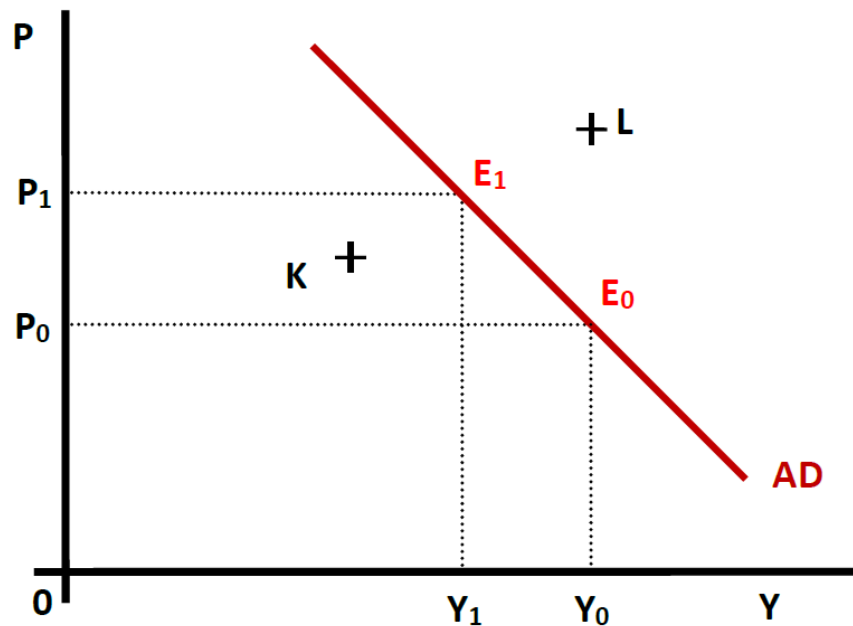
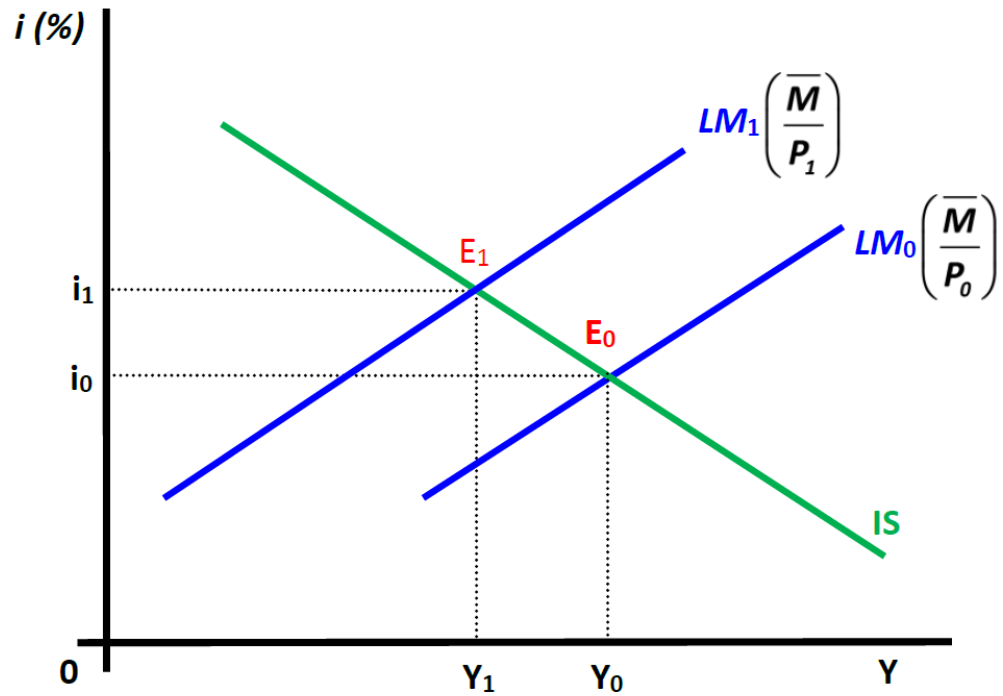
Funkce čistého exportu



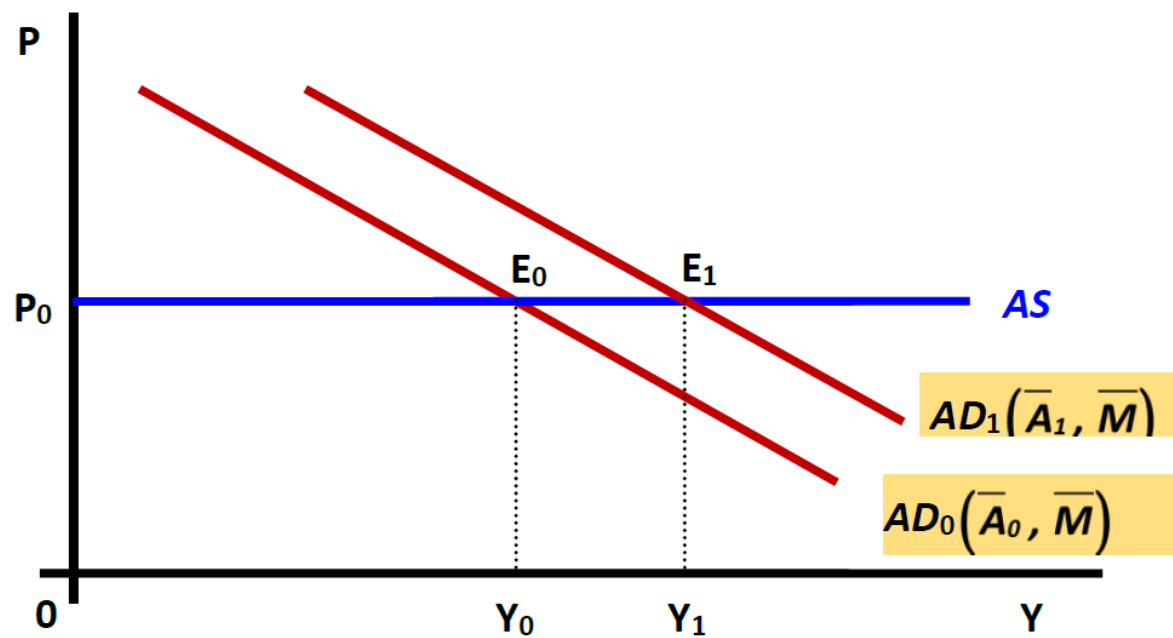
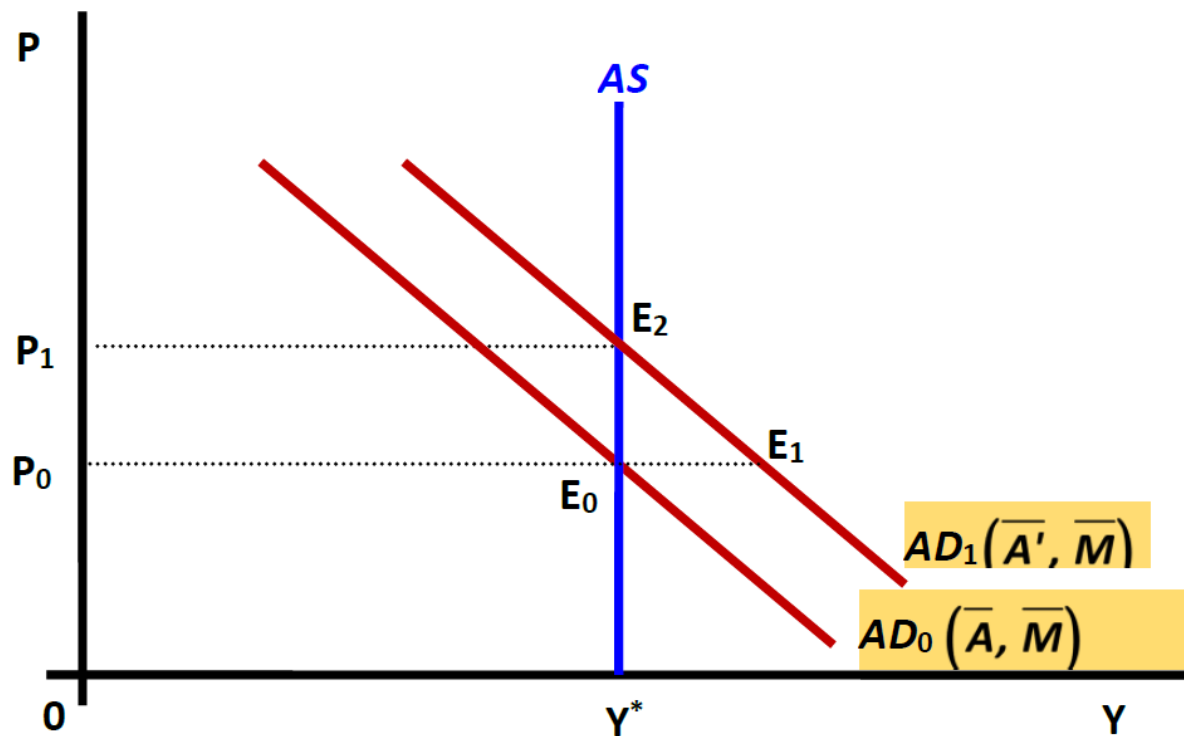
IS-LM-BP dokonalá a nedokonalá kapitálová mobilita



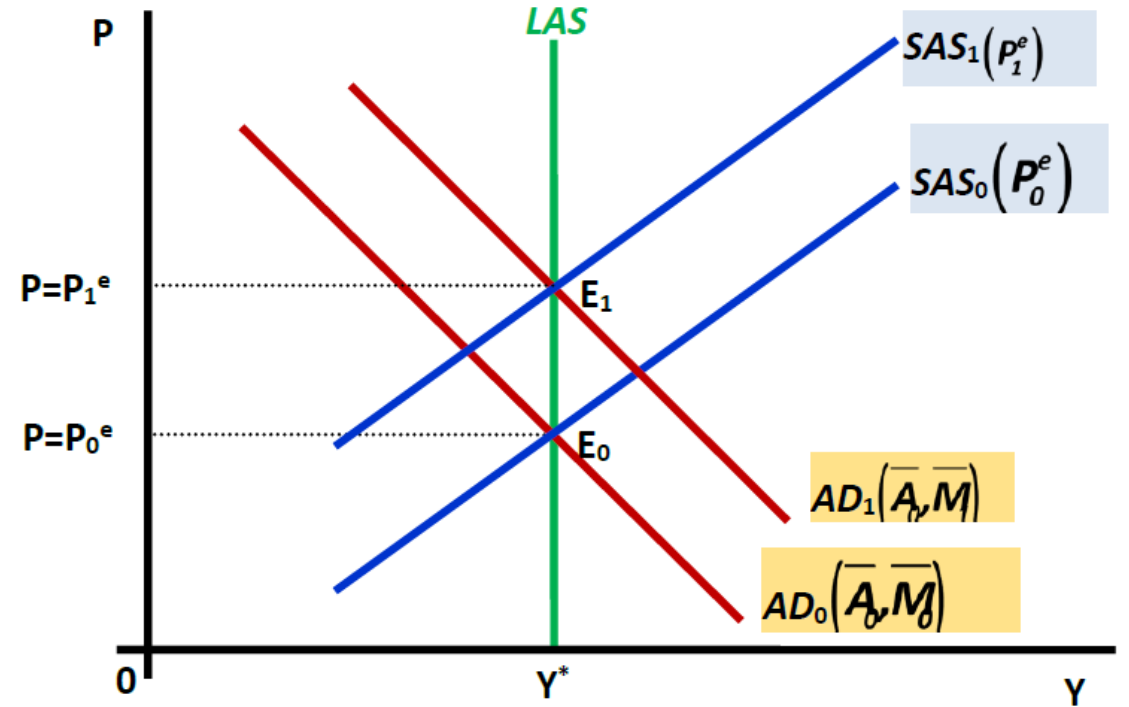
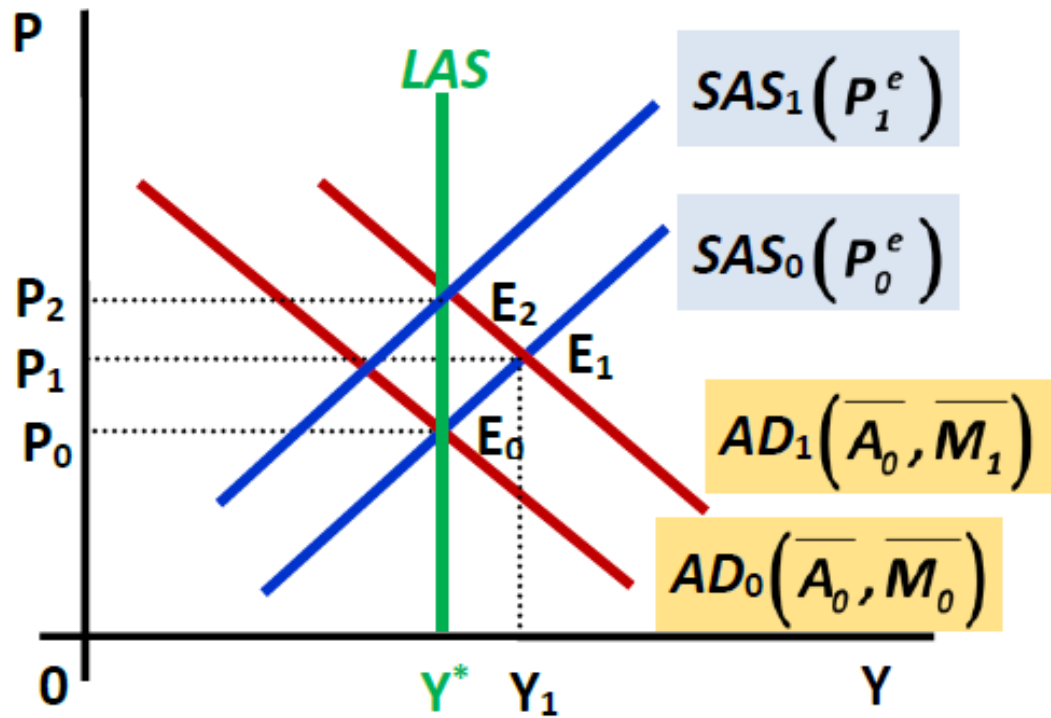
Odvození AD z modelu IS-LM



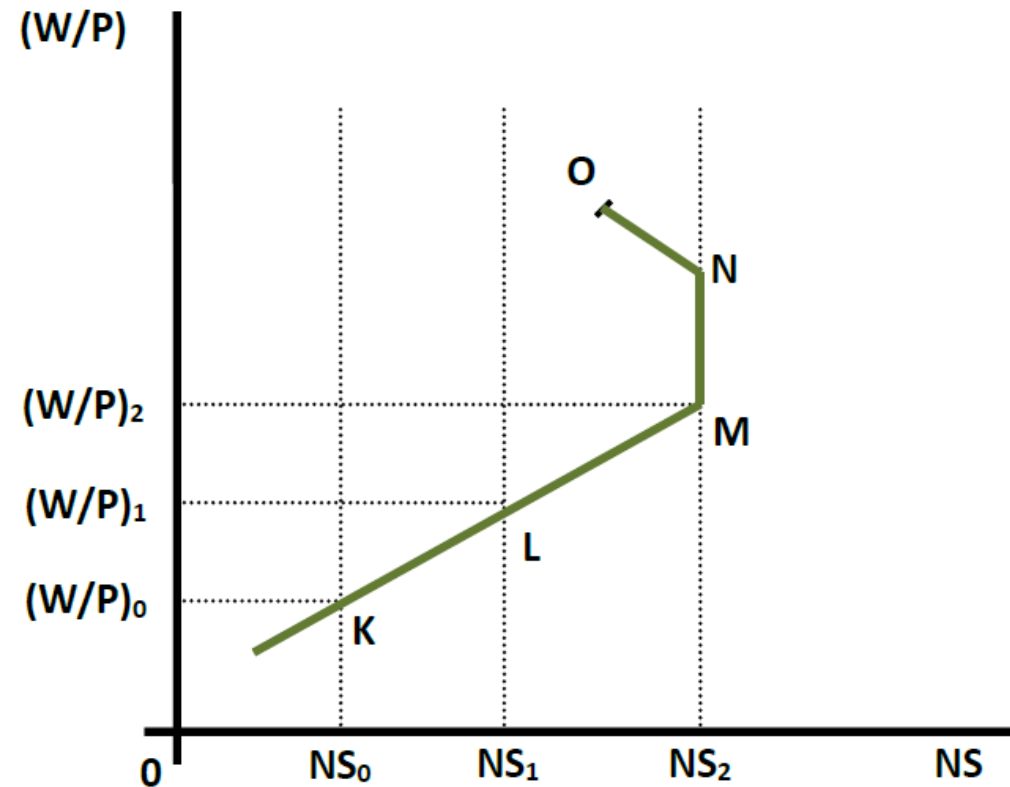
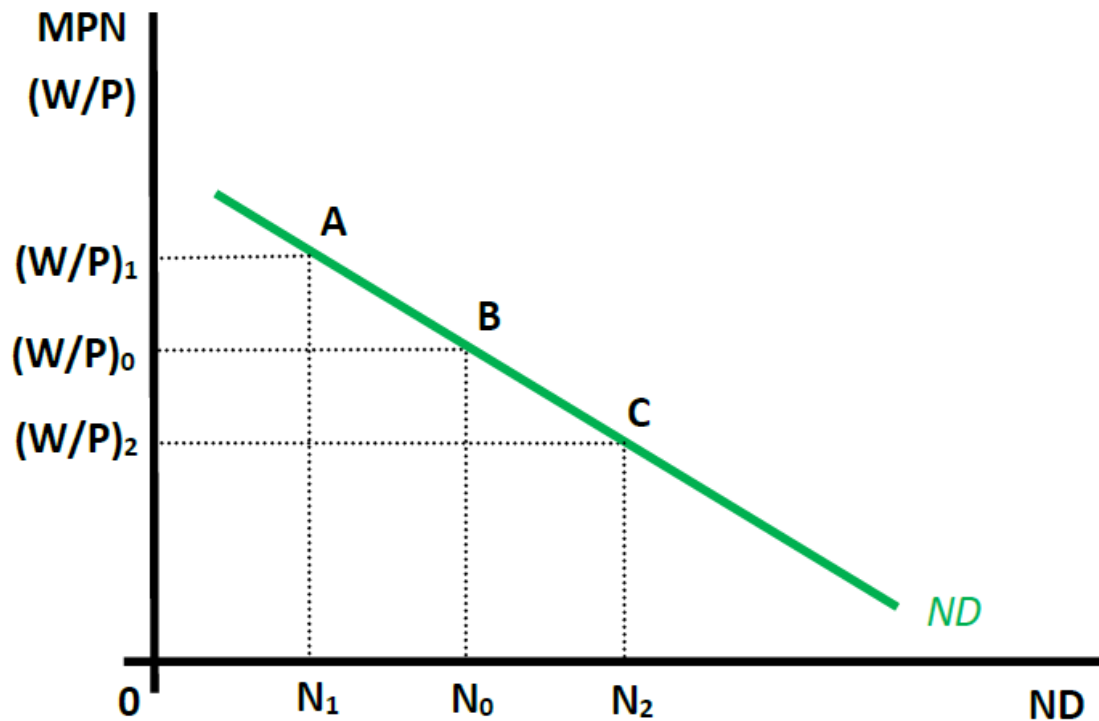
AS – extrémní klasická, extrémní keynesiánská



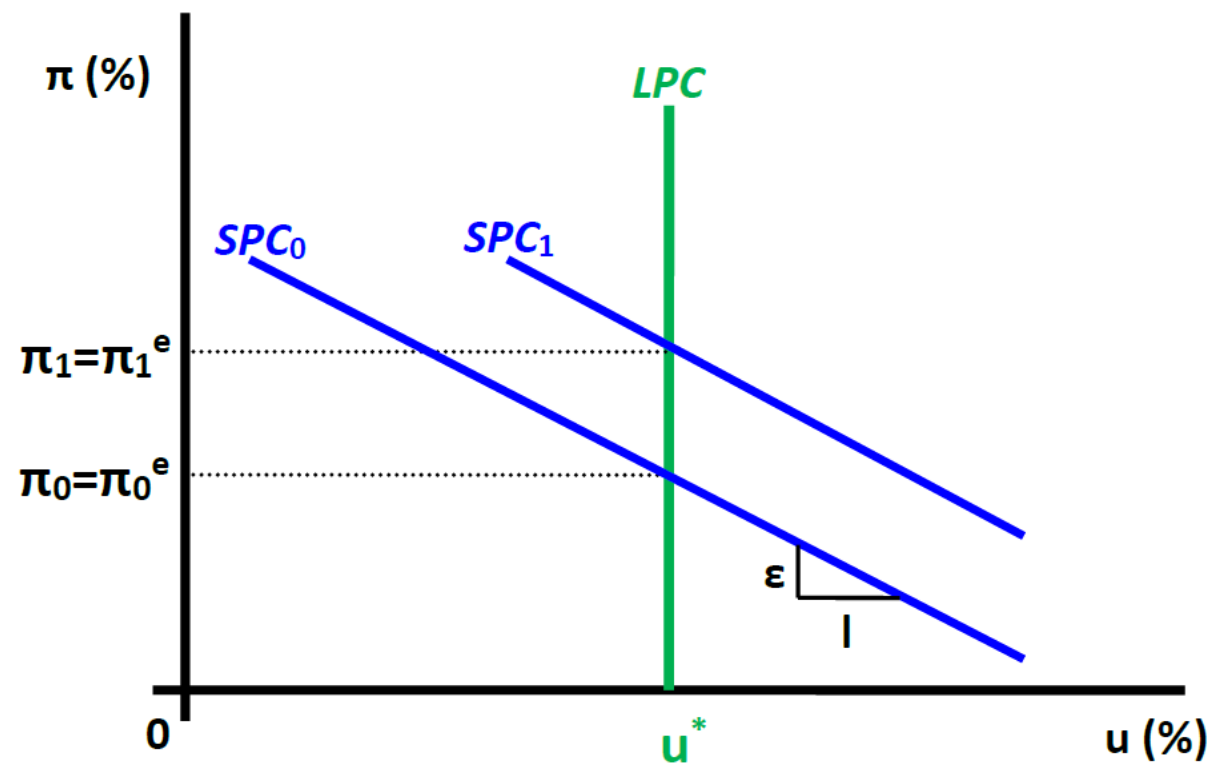
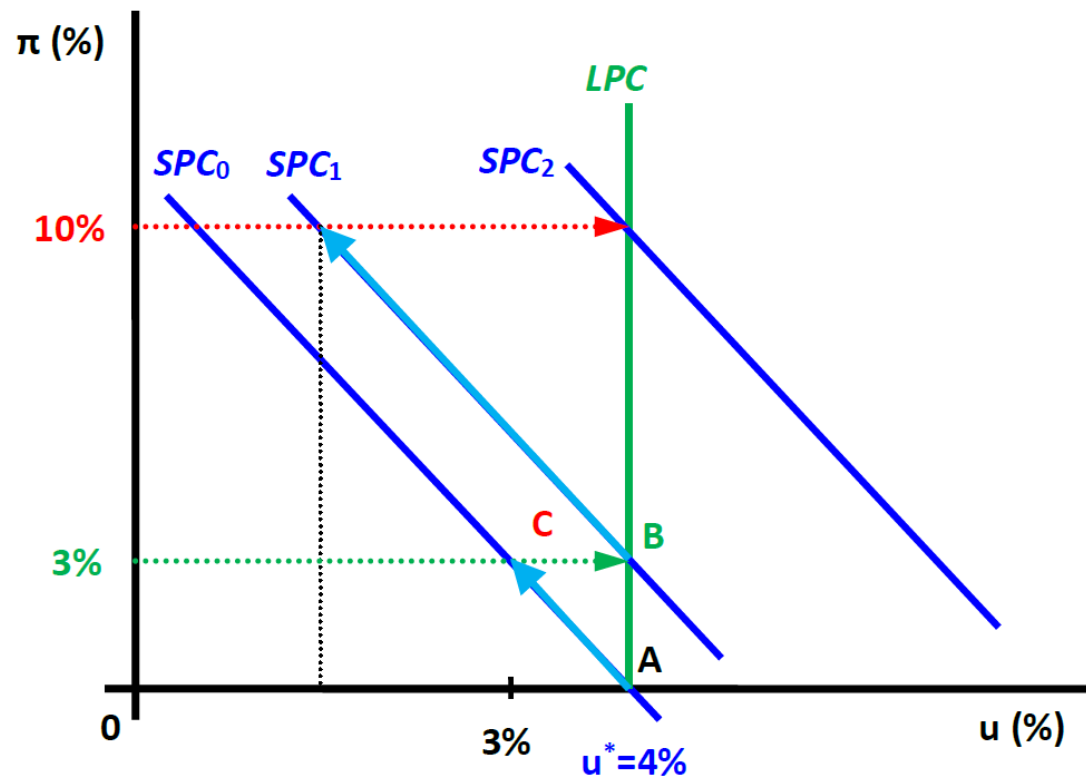
AS – očekávání Friedman, Lucas



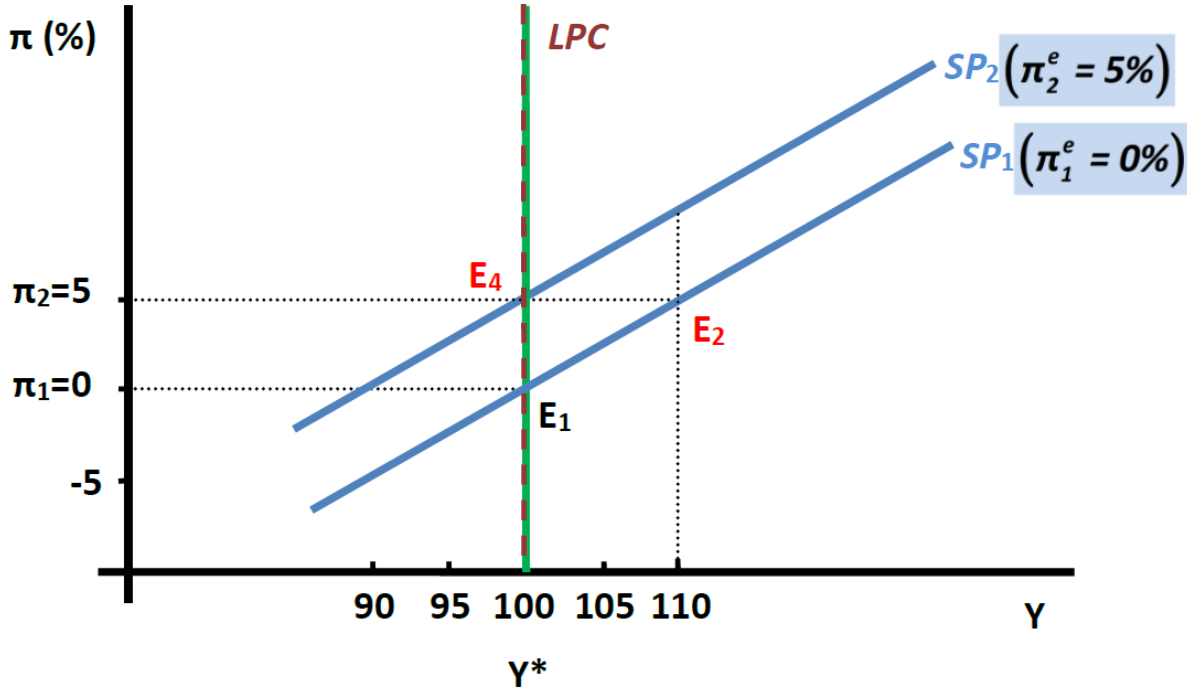
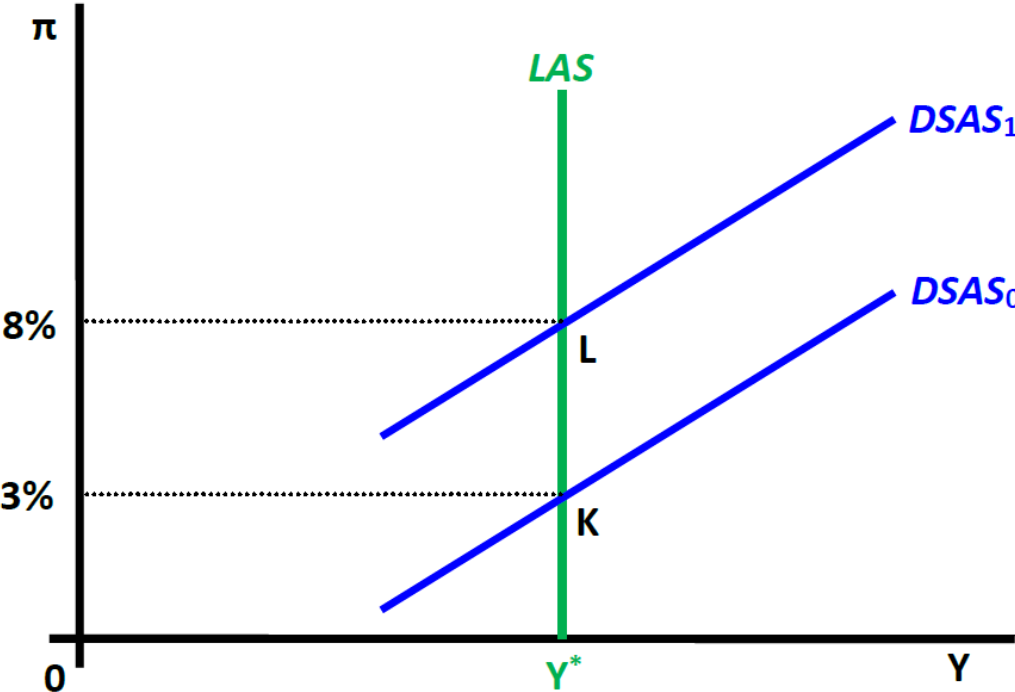
Trh práce – ND, NS



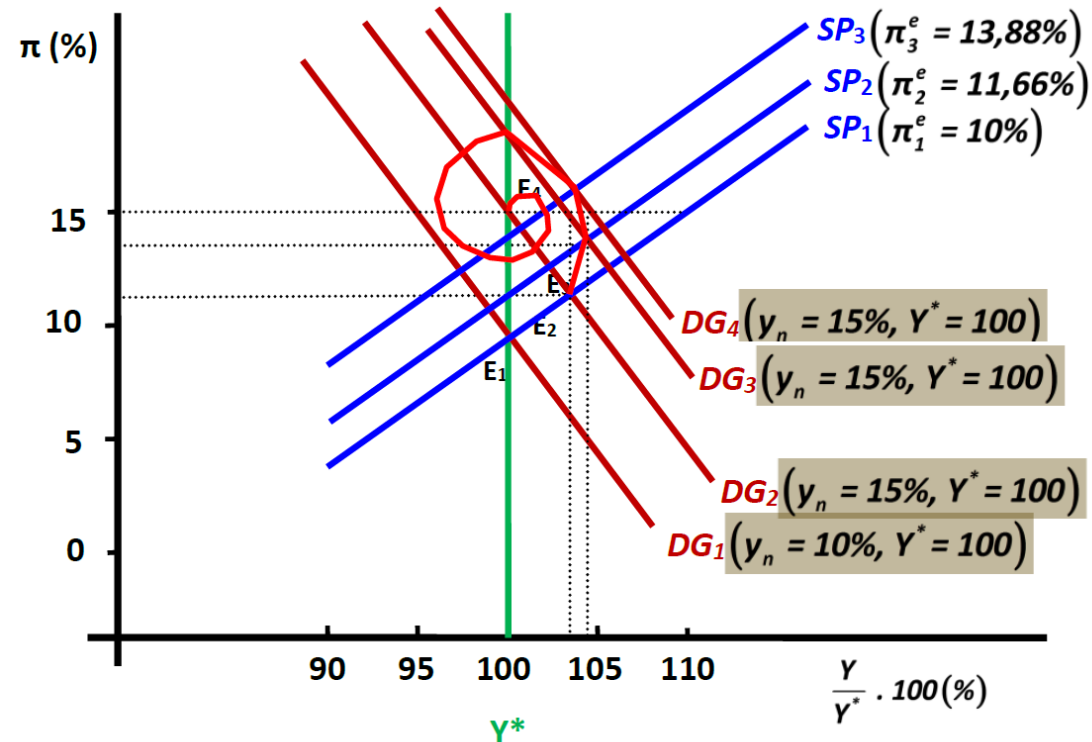
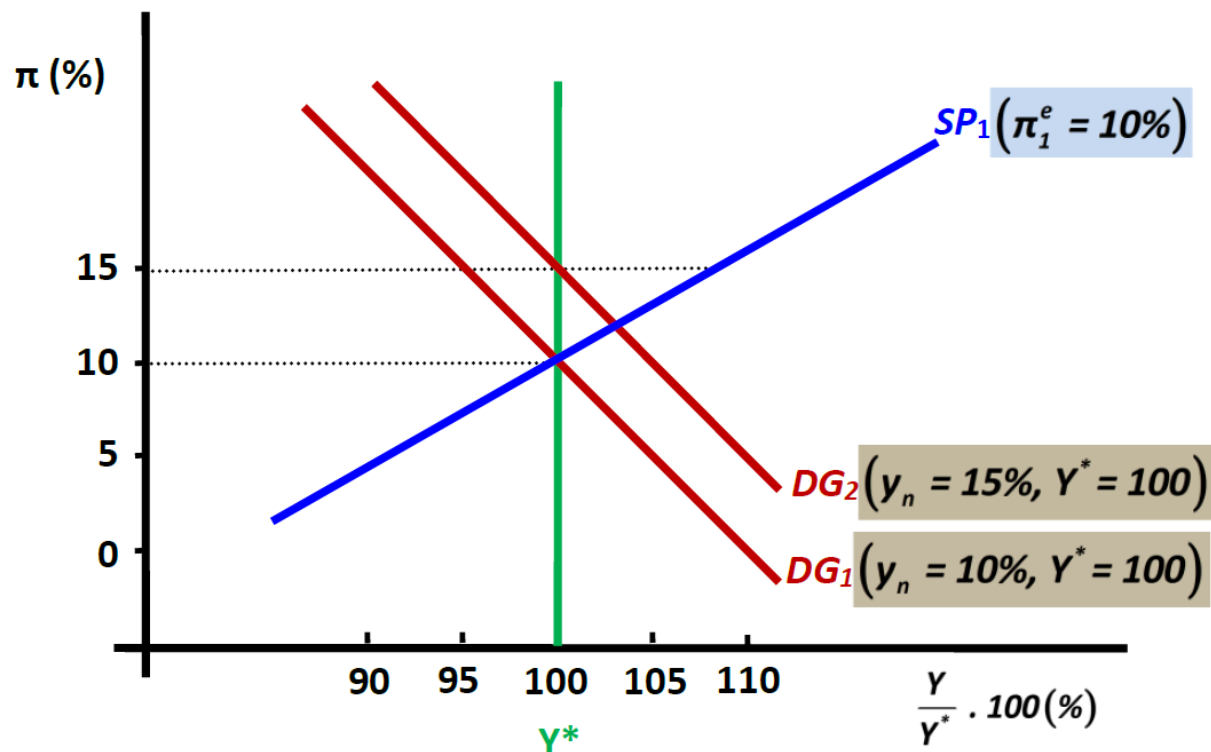
Phillipsova křivka



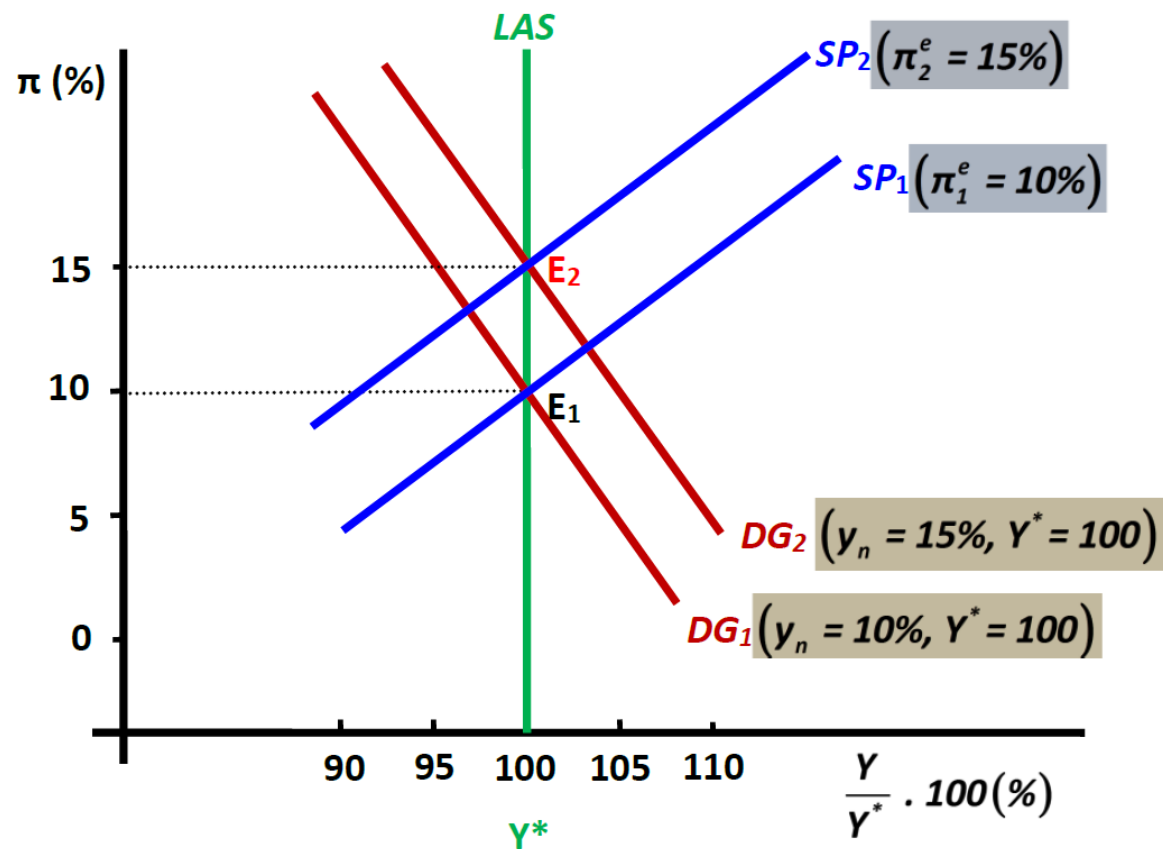
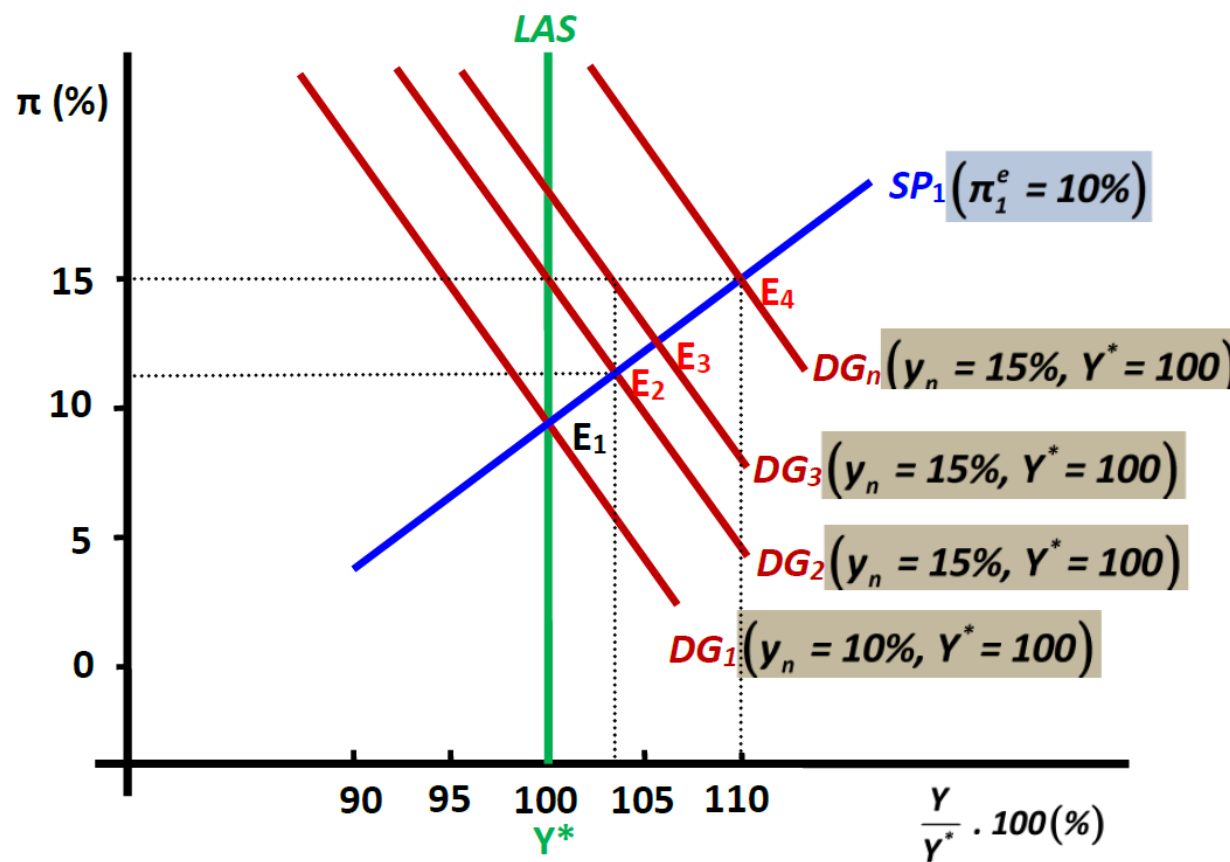
DSAS a SP



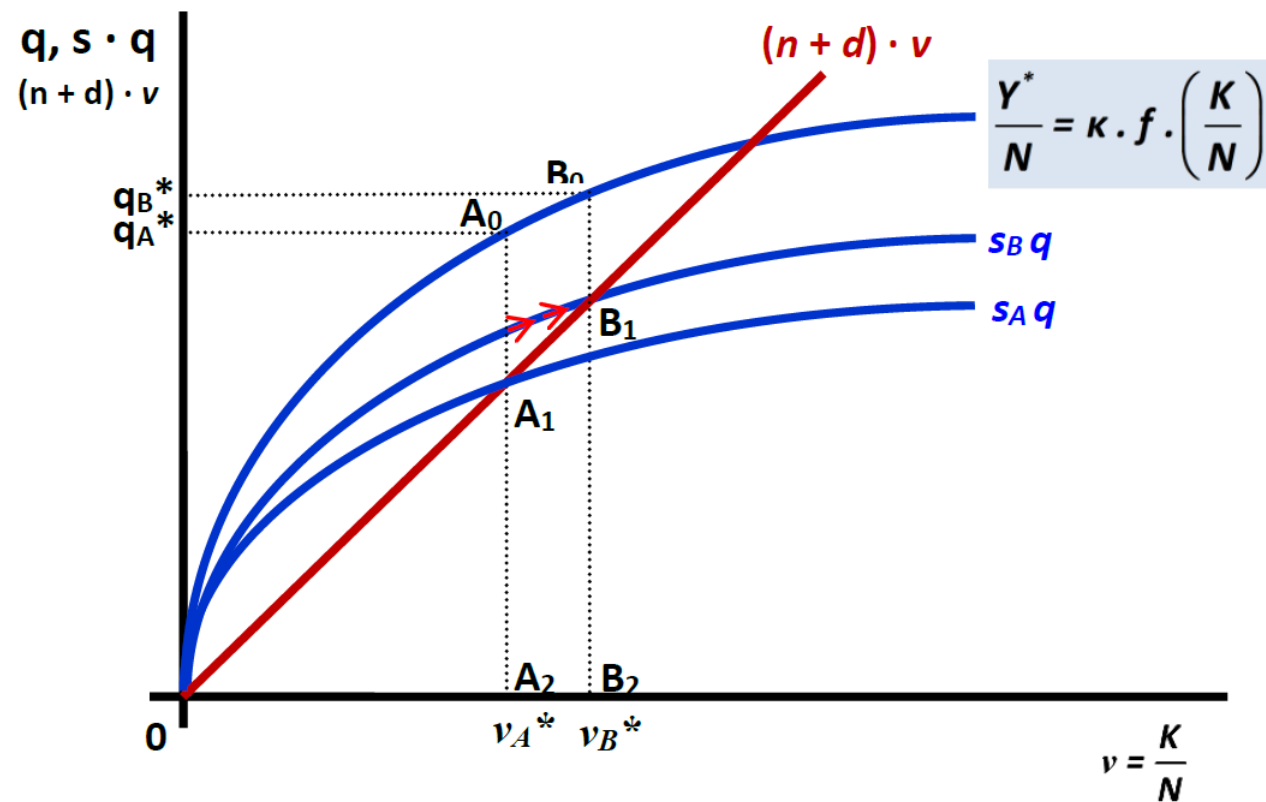
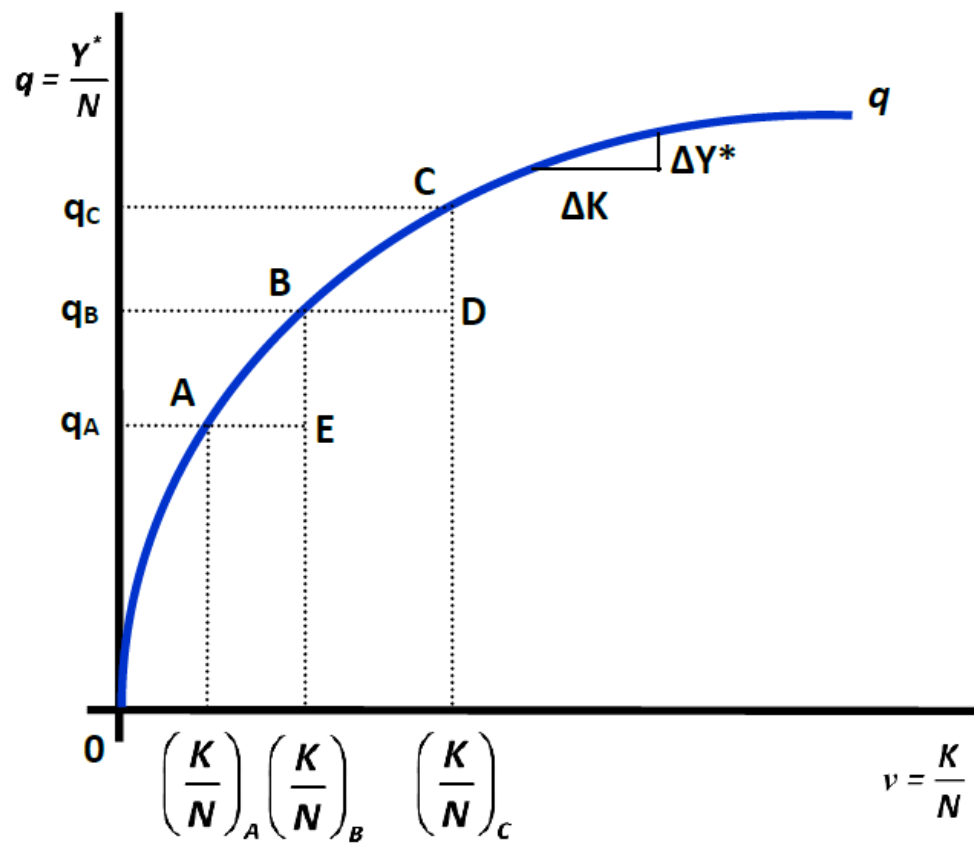
SP, DG, přizpůsobovací cesta



Přizpůsobovací cesta



Produkční funkce a úspory



Vliv obyvatel a technologického pokroku

